

NOT FOR CONSTRUCTION

D	21-10-24	REISSUED FOR DA		
C	06-08-24	REISSUED FOR DA		
B	01-09-23	ISSUED FOR DA		
A	25-11-22	ISSUED FOR DRP		
ISSUE	DATE	DESCRIPTION	initials	chkd
sign			date	
⊜These drawings are not to be scaled. Figured dimensions shall be used in all cases.				

COPYRIGHT - These drawings remain the exclusive copyright of ADM Architects. Reproductions in any form whether electronic, digital or otherwise shall not be allowed except by express permission granted in writing by ADM Architects.

FIGURED DIMENSIONS - These drawings are not to be scaled. Figured dimensions shall be used in all cases.

DISCREPANCIES IN DIMENSIONS/POSITIONS/LOCATIONS/FINISHES The Contractor is to verify any dimensional, location or finish discrepancy with ADM Architects prior to any physical construction or setting out so that ADM Architects is given the opportunity to resolve potential discrepancies or conflicts in sufficient time without causing abortive work. The Contractor shall be responsible for notifying ADM Architects of any such discrepancy or conflict that may arise on site.

CO-ORDINATION OF WORKS - These drawings are to be read in conjunction with the full set of consultant's drawings, specifications, reports and DA conditions.

NOMINATED ARCHITECT - The nominated Architect for ADM Projects (Australia) Pty Ltd T/A ADM Architects is Angelo Di Martino ARB No.7608



adm
ARCHITECTS

94 Kembla St, Wollongong NSW 2500 PO Box 3061 Wollongong
ph: 02 4228 8400 fax: 02 4228 8455 www.admarchitects.com.au

JACKSON TEECE

Sydney
Level 1, 101 Pitt St, 22 Hickson Road
Sydney, NSW 2000 Australia
T +61 2 9250 2722
F +61 2 9250 2720
jteece@jacksonteece.com

Brisbane
Level 20, 340 Queen Street
Brisbane, QLD 4000 Australia
T +61 7 3226 2771
F +61 7 3226 2768
brisbane@jacksonteece.com

Jackson Teece Chesterman
Wills Pty Ltd
Trading as Jackson Teece
ABN 15 603 887 300

Nominated Architects
Chesterman Barker (B192), John Gove (B1795), Daniel Hudson (B1716)

Concepts and information contained in this drawing are copyright and may not be reproduced in whole or part or by any medium, without the written permission of Jackson Teece. Do not scale this drawing, use figured dimensions only. Verify all project dimensions before commencing on-site work or off-site fabrication. Notify Jackson Teece of any discrepancies and seek instructions.

Project
PROPOSED 3-STAGE MIXED USE DEVELOPMENT COMPRISING OF HOTEL, OFFICE, MOTEL AND CLUB OVER BASEMENT PARKING
for
171 CROWN PTY LTD
at
80-82 CHURCH & 163-171 CROWN ST WOLLONGONG

scale	NTS				
date	OCTOBER 2024				
drawn	LGD	SJ	HR	chkd	ADM
drawing	DEVELOPMENT APPLICATION				
COLOUR & MATERIALS SCHEDULE 01					
Project No.	Drawing No.			issue	
2021-15	A-601			D	



COLOUR AND MATERIALS SCHEDULE

1 ALUMINIUM CLADDING VITRADUAL (NON COMBUSTIBLE) MONUMENT WALLING	2 OFF FORM CONCRETE FINISH CONCRETE EDGES, & WALLING	3 TIMBER LOOK ALUMINIUM SCREENING GOLDEN OAK SCREENING, LOUVRES	4 SHOP FRONT GLAZING CLEAR GLAZING ELEMENTS AND BALUSTRADES	5 GLAZING TINTED THERMALLY VENTED DOUBLE GLAZING PANELS (INTERNAL TIMBER BLINDS)	6 ALUMINIUM DURETEC POWDERCOAT MONUMENT DOOR AND WINDOW FRAMES, HANDRAILS, LOUVRES, SECURITY SHUTTERS, SLAB EDGES & SCREENING	7 SANDSTONE CLADDING CLADDING WITH JOINTS	8 STANDING SEAM COLORBOND CLADDING WITH JOINTS (NON COMBUSTIBLE) MONUMENT	9 ALUMINIUM PERFORATED SCREEN DURATEC FINE GOLD PEARL KINETIC
10 METALLIC CLADDING ELECTRO NEW COPPER KINETIC STEEL FRAME BEAM, SLAB EDGES, LOUVRES, ROOF, AWNING & SUNSHADES	11 TIMBER WALL CLADDING GOLDEN OAK WALLING & AWNING	12 WALL CLADDING BLUE STONE GRANITE WALLING	13 OFF FORM CONCRETE FINISH CONCRETE EDGES, & WALLING					

NOT FOR CONSTRUCTION

C	21-10-24	REISSUED FOR DA		
B	01-09-23	ISSUED FOR DA		
A	25-11-22	ISSUED FOR DRP		
ISSUE	DATE	DESCRIPTION	initials	chkd
sign			date	
These drawings are not to be scaled. Figured dimensions shall be used in all cases.				

COPYRIGHT - These drawings remain the exclusive copyright of ADM Architects. Reproductions in any form whether electronic, digital or otherwise shall not be allowed except by express permission granted in writing by ADM Architects.

FIGURED DIMENSIONS - These drawings are not to be scaled. Figured dimensions shall be used in all cases.

DISCREPANCIES IN DIMENSIONS/POSITIONS/LOCATIONS/FINISHES The Contractor is to verify any dimensional, location or finish discrepancy with ADM Architects prior to any physical construction or setting out so that ADM Architects is given the opportunity to resolve potential discrepancies or conflicts in sufficient time without causing abortive work. The Contractor shall be responsible for notifying ADM Architects of any such discrepancy or conflict that may arise on site.

COORDINATION OF WORKS - These drawings are to be read in conjunction with the full set of consultant's drawings, specifications, reports and DA conditions.

NOMINATED ARCHITECT - The nominated Architect for ADM Projects (Australia) Pty Ltd T/A ADM Architects is Angelo Di Martino ARB No.7608



adm
ARCHITECTS

94 Kembla St, Wollongong NSW 2500 PO Box 3561 Wollongong
ph: 02 4228 8400 fax: 02 4228 8455 www.admarchitects.com.au

JACKSON TEECE

Sydney
Level 1, 100-102, 22 Hickson Road
Sydney, NSW 2000 Australia
T +61 2 9250 7772
F +61 2 9250 7771
jteece@jacksonteece.com.au

Brisbane
Level 20, 344 Queen Street
Brisbane, QLD 4000 Australia
T +61 7 3226 2771
F +61 7 3226 2886
brisbane@jacksonteece.com.au

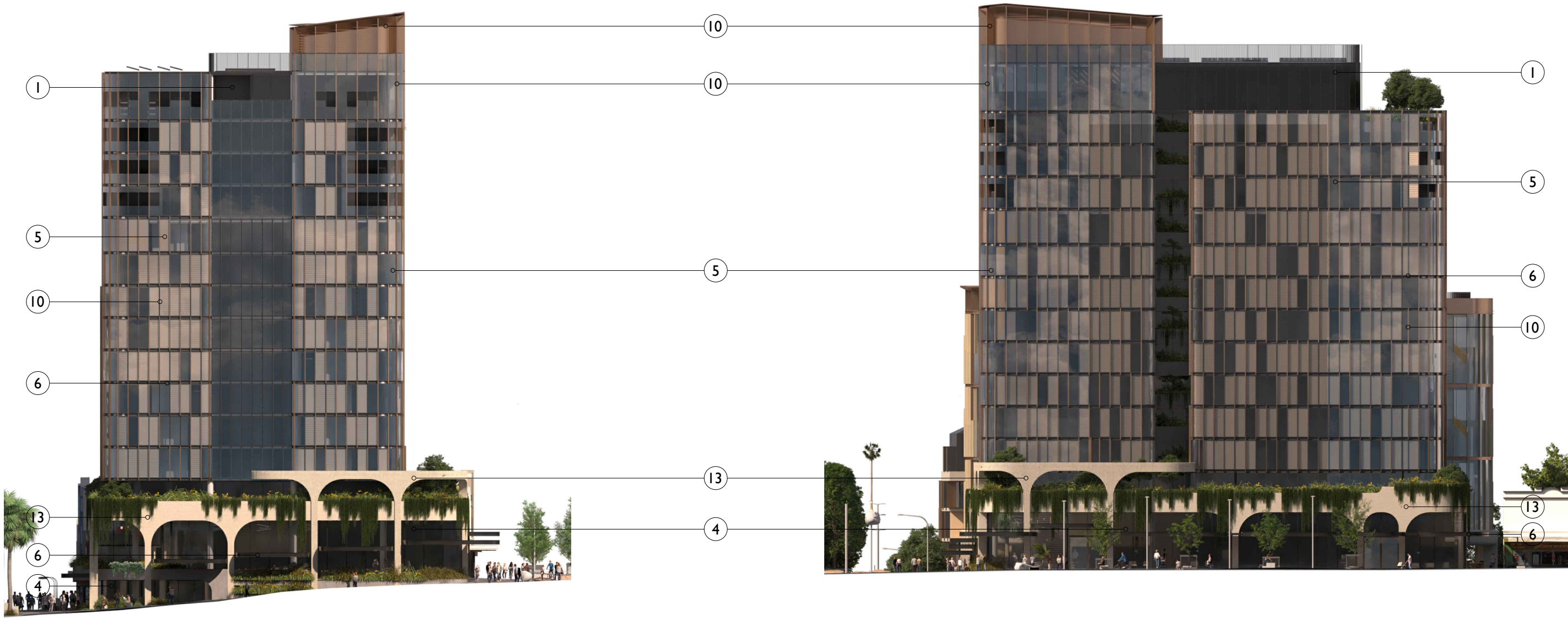
Jackson Teece Chesterman
Wills Pty Ltd
Trading as Jackson Teece
ABN 15 661 817 292

Nominated Architects
Darren Barber (B192), John Goss (B176), Daniel Hudson (B191)

Concepts and information contained in this drawing are copyright and may not be reproduced in whole or part or by any medium, without the written permission of Jackson Teece. Do not scale this drawing, use figured dimensions only. Verify all project dimensions before commencing on-site work or off-site fabrication. Notify Jackson Teece of any discrepancies and seek instructions.

Project
PROPOSED 3-STAGE MIXED USE
DEVELOPMENT COMPRISING OF
HOTEL, OFFICE, MOTEL AND CLUB
OVER BASEMENT PARKING
for
171 CROWN PTY LTD
at
80-82 CHURCH & 163-171 CROWN ST
WOLLONGONG

scale	NTS				
date	OCTOBER 2024				
drawn	LGD	SJ	HR	chkd	ADM
drawing	DEVELOPMENT APPLICATION				
COLOUR & MATERIALS SCHEDULE 02					
Project No.	Drawing No.			issue	
2021-15	A-602			C	



COLOUR AND MATERIALS SCHEDULE

1

ALUMINIUM CLADDING
VITRADUAL
(NON COMBUSTIBLE)

MONUMENT

WALLING

2

OFF FORM CONCRETE
FINISH

CONCRETE EDGES,
& WALLING

3

TIMBER LOOK
ALUMINIUM SCREENING

GOLDEN OAK

SCREENING, LOUVRES

4

SHOP FRONT GLAZING

CLEAR

GLAZING ELEMENTS AND
BALUSTRADES

5

GLAZING

TINTED

THERMALLY VENTED DOUBLE
GLAZING PANELS
(INTERNAL TIMBER BLINDS)

6

ALUMINUM DURETEC
POWDERCOAT
MONUMENT

DOOR AND WINDOW FRAMES,
HANDRAILS, LOUVRES, SECURITY
SHUTTERS, SLAB EDGES &
SCREENING

7

SANDSTONE CLADDING

CLADDING WITH JOINTS

8

STANDING SEAM
COLORBOND
CLADDING
CLADDING WITH JOINTS
(NON COMBUSTIBLE)
MONUMENT

9

ALUMINIUM
PERFORATED SCREEN

DURATEC
FINE GOLD PEARL KINETIC

10

METALLIC CLADDING

ELECTRO
NEW COPPER KINETIC

STEEL FRAME, BEAM, SLAB EDGES, LOUVRES,
ROOF, AWNING & SUNSHADES

11

TIMBER WALL
CLADDING

GOLDEN OAK

WALLING & AWNING

12

WALL CLADDING

BLUE STONE GRANITE

WALLING

13

OFF FORM CONCRETE
FINISH

CONCRETE EDGES,
& WALLING

D	21-10-24	REISSUED FOR DA		
C	06-08-24	REISSUED FOR DA		
B	01-09-23	ISSUED FOR DA		
A	25-11-22	ISSUED FOR DRP		
ISSUE	DATE	DESCRIPTION	initials	chkd
sign _____ date _____				
These drawings are not to be scaled. Figured dimensions shall be used in all cases.				

COPYRIGHT - These drawings remain the exclusive copyright of ADM Architects. Reproductions in any form whether electronic, digital or otherwise shall not be allowed except by express permission granted in writing by ADM Architects.
FIGURED DIMENSIONS - These drawings are not to be scaled. Figured dimensions shall be used in all cases.
DISCREPANCIES IN DIMENSIONS/POSITIONS/LOCATIONS/FINISHES The Contractor is to verify any dimensional, location or finish discrepancy with ADM Architects prior to any physical construction or setting out so that ADM Architects is given the opportunity to resolve potential discrepancies or conflicts in sufficient time without causing abortive work. The Contractor shall be responsible for notifying ADM Architects of any such discrepancy or conflict that may arise on site.
CO-ORDINATION OF WORKS - These drawings are to be read in conjunction with the full set of consultant's drawings, specifications, reports and DA conditions.
NOMINATED ARCHITECT - The nominated Architect for ADM Projects (Australia) Pty Ltd T/A ADM Architects is Angelo Di Martino ARB No.7608



adm

ARCHITECTS

94 Kembla St, Wollongong NSW 2500 PO Box 3561 Wollongong
ph: 02 4228 6400 fax: 02 4228 6455 www.admarchitects.com.au

JACKSON TEECE

Sydney
Level 1, Plot 8/8, 23 Hickson Road
Sydney, NSW 2000 Australia
T +61 2 9260 7722
F +61 2 9260 7180
jteece@jacksonteece.com
Brisbane
Level 20, 344 Queen Street
Brisbane, QLD 4000 Australia
T +61 7 5206 2771
F +61 7 5206 2386
brisbane@jacksonteece.com
Jackson Teece Chesterman
Woolly Pty Ltd
Trading as Jackson Teece
ABN 15 955 837 293
Nominated Architects
Chesterman Barker (B192), John Gove (B1795), Daniel Hudson (B3116)
Concepts and information contained in this drawing are copyright and may not be reproduced in whole or part or by any medium, without the written permission of Jackson Teece. Do not scale the drawing, use figured dimensions only. Verify all project dimensions before commencing on-site work or off-site fabrication. Notify Jackson Teece of any discrepancies and seek instructions.

Project
PROPOSED 3-STAGE MIXED USE
DEVELOPMENT COMPRISING OF
HOTEL, OFFICE, MOTEL AND CLUB
OVER BASEMENT PARKING
for
171 CROWN PTY LTD
at
80-82 CHURCH & 163-171 CROWN ST
WOLLONGONG

scale	NTS
date	OCTOBER 2024
drawn	LGD SJ HR chkd ADM
drawing	DEVELOPMENT APPLICATION
COLOUR & MATERIALS SCHEDULE 03	
Project No.	2021-15
Drawing No.	A-603
issue	D

NOT FOR CONSTRUCTION